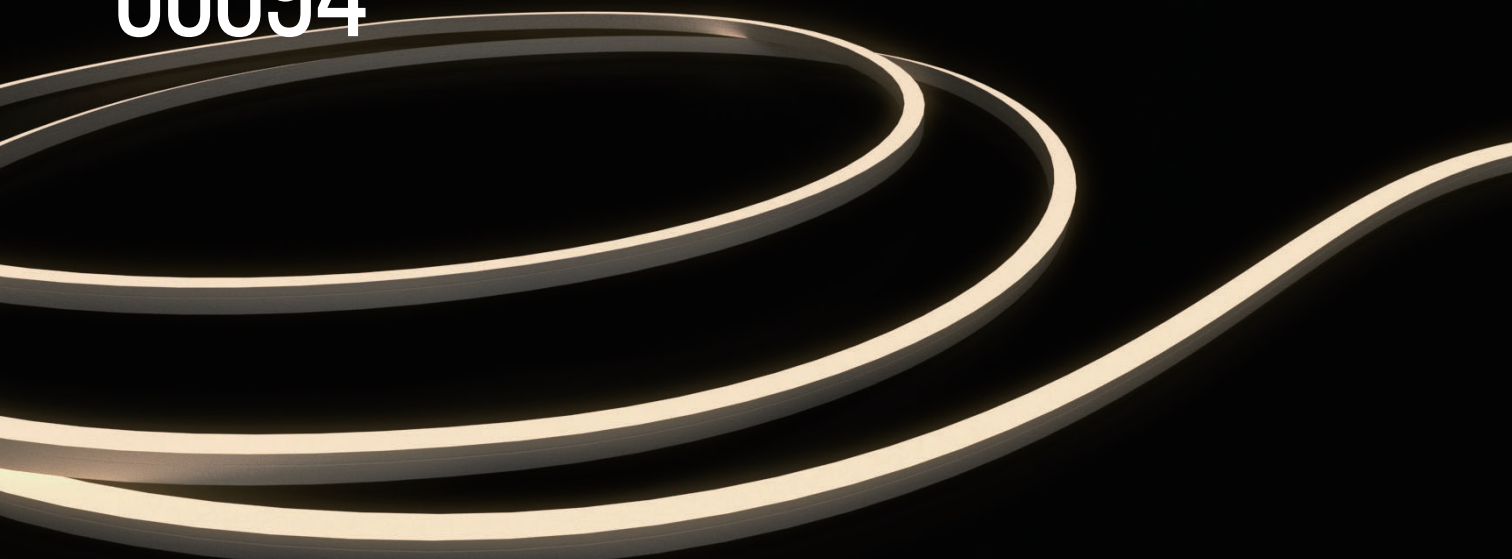


WAKO UNAGI SIDE BEND UG094



FEATURES

- Homogeneous Lighting Effect
- Uniform Light Distribution
- High Color Rendering
- Single Bin
- Curvable Side Bend Light Formation
- IP65 Protection

APPLICATIONS

- Architectural Lighting
- Indirect Lighting
- Indoor Lighting
- Semi-Outdoor Lighting



Ra	95
R1	95
R2	97
R3	97
R4	94
R5	95
R6	95
R7	99
R8	97
R9	95
R10	96
R11	91
R12	90
R13	95
R14	97
R15	96

SPECIFICATIONS

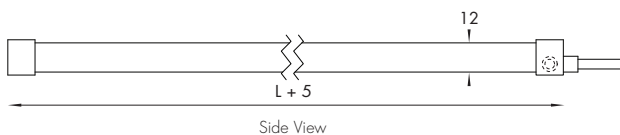
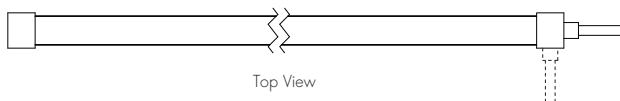
DIMENSION

Size	12 mm (W) x 12 mm (H)
Unit length	5000 mm
Cutlength	50 mm
Bending radius	60 mm
Storage temperature	-20°C to 70°C
Operating temperature	-10°C to 40°C

OPTICAL

Color temperature ^{*1}	2700K / 3000K / 3500K / 4000K
CRI	>95
SDCM	<2 / Single Bin
Lumen/meter ^{*2}	399 lm (14W), 285 lm (10W), 214 lm (7W)
Lifetime LM-80	>60000 hrs

EXTERNAL DIMENSION



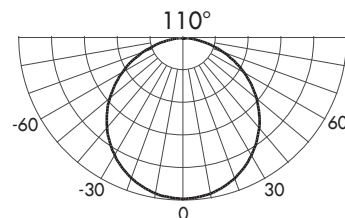
ELECTRICAL

Power input	DC 24V		
Power consumption ^{*1}	14 W/m	10 W/m	7 W/m
Maximum length per circuit	5 m		
Dimming (by external driver)	0-10V / 1-10V / DALI / DMX		

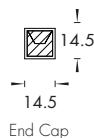
CERTIFICATIONS

IP class	IP65
Safety standard	IEC TR 62778 2011/65/EU 2015/863/EU

PHOTOMETRIC



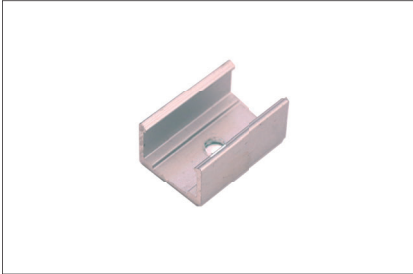
BEND DIRECTION



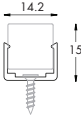
^{*1} Custom power consumption and color temperature options are available on request

^{*2} Typical value based on 3000K, CRI>95

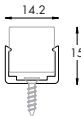
ACCESSORIES OPTIONS



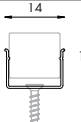
Mounting Bracket ^{*1,2}
M00133



1m Mounting Rail Straight ^{*1,2}
M00187



1m Mounting Rail Flexible ^{*1,2}
M00186



^{*1} This mounting method is not suitable for Bottom Cable Entry
^{*2} To be installed with M3 flat head screws (not included)

ORDER CODE SYSTEM

UG094-V 027-140-B D 5000

1 2 3 4 5

1 CRI

V >95

2 CCT*¹

027	2700K
030	3000K
035	3500K
040	4000K

3 POWER*¹

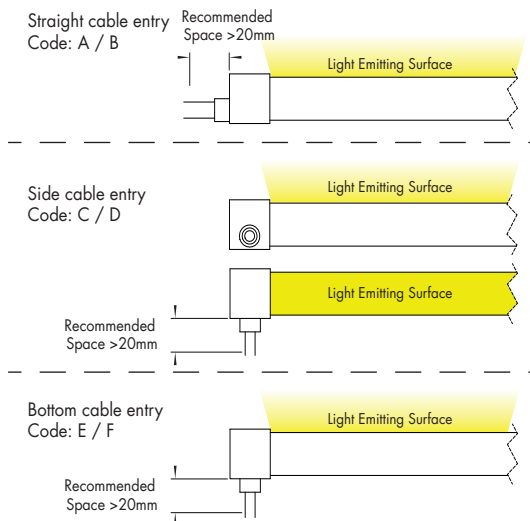
140	14 W/m
100	10 W/m
070	7 W/m

4 CABLE ENTRY

A	Single Straight
B	Double Straight
C	Single Side
D	Double Side
E	Single Bottom
F	Double Bottom

5 LENGTH

5000 5000mm



¹ Each product comes in reel of 5m length

² This product requires a constant voltage power supply, please contact WAKO for recommended models

³ All data provided are typical values with manufacturing tolerances up to 10%

⁴ For further requirements, please contact WAKO

*¹ Custom power consumption and color temperature options are available on request